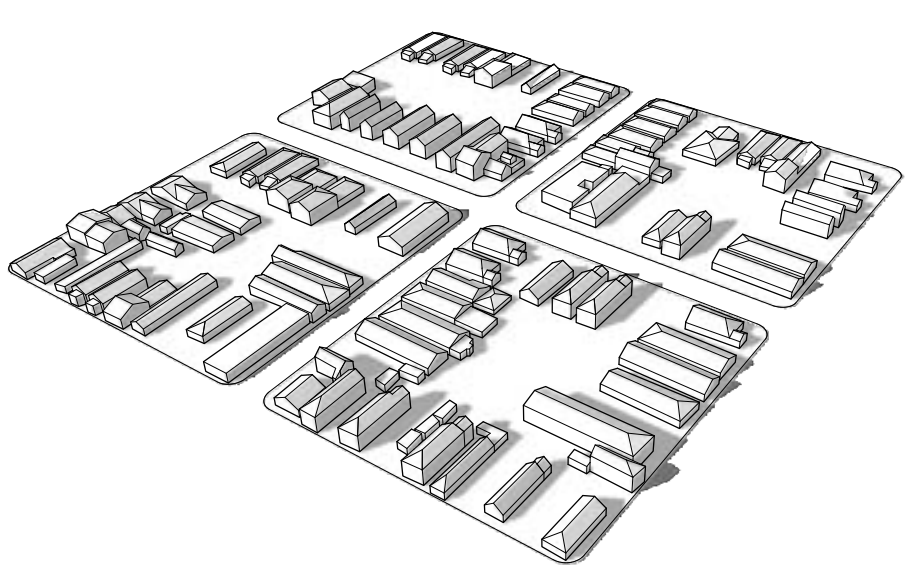
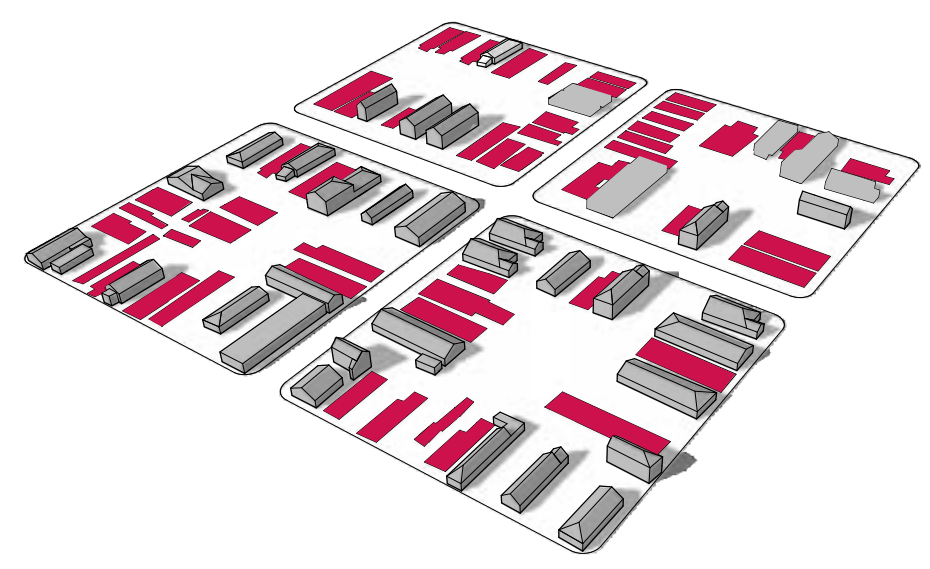


GROWIN' PODS proposes a new model for **green and healthy living** for the sustainable regeneration of the Tulane-Gravier neighborhood. By initiating an **ecological dialogue with NOLA's City Park**, a resilient, active and vibrant community grows **into a live-in park** at the other end of the historic Bayou St John's canal. At its core, this people oriented development relies on the ecological and social opportunities offered by Tulane-Gravier's mosaic of underexploited vacant lots to create an inhabited and eventful urban park.

Growin' Pods is a 'free zone' of rich and diverse public spaces shaped to the needs of the community. This project borrows from urban forestry to orient a strategy of **green acupuncture** to nurture a thriving and resilient community.



NOLA IN ITS HEYDAY



KATRINA'S FAULT



GROWING 'WILDER' VACANT LOTS FOR A COMMUNITY GATHERING



USE VACANT LOTS AS IMPROVEMENT OPPORTUNITIES

To cultivate responsibility in community gardens and orchards to gather, meet and circulate in pocket parks to nurture indigenous trees and shrubs in locally-managed nurseries to manage storm water runoff with varied ecological devices to give generous and equal access to nature



GIVE AN AGEING INFRASTRUCTURE A NEW LEASE ON LIFE

to transform the underside of I-10 as a connecting space rather than a barrier to bring healthy food and produce from the new 'farmers' market close to residents to provide easy access to the Lafitte Greenway from Canal Street



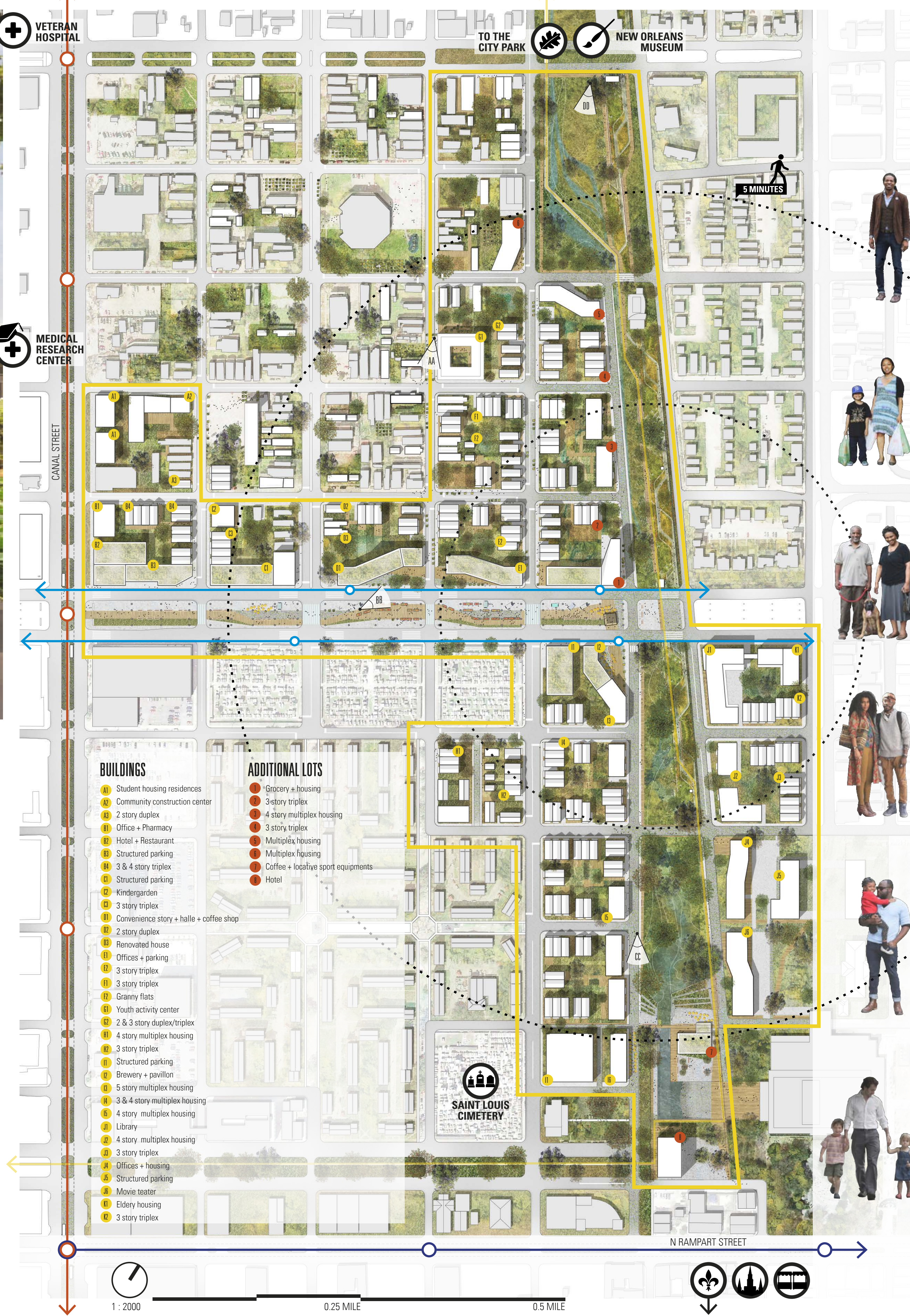
CREATE A DIVERSIFIED AND MEANING RESIDENTIAL ENVIRONMENT

to optimize underserved and shape them to residents' needs to interpret and adapt the shotgun house type to the needs of new and established households to provide complementary housing choices in the form of granny flats and apartment buildings to build on the inherited local character of porch life



INTERTWINE ADJACENT NEIGHBORHOODS WITH PUBLIC SPACE

to infiltrate green capillaries into the built environment to stimulate and sustain 'active' lifestyles to foster a sense of community and belonging to connect people



BUILDINGS

- Student housing residences
- Community construction center
- 2 story duplex
- Office + Pharmacy
- Hotel + Restaurant
- Structured parking
- 3 & 4 story triplex
- Structured parking
- Kindergarten
- 3 story triplex
- Conference story + hall + coffee shop
- 2 story duplex
- Renovated house
- Office + parking
- 3 story triplex
- 2 story triplex
- Granny flats
- Youth activity center
- 2 & 3 story duplex/triplex
- 4 story multiplex housing
- 3 story triplex
- Structured parking
- Brewery + pavilion
- 5 story multiplex housing
- 3 & 4 story multiplex housing
- 1 story multiplex housing
- Library
- 4 story multiplex housing
- 3 story triplex
- Office + housing
- Structured parking
- Movie theater
- Elderly housing
- 3 story triplex

ADDITIONAL LOTS

- Geometry + housing
- 3 story triplex
- 4 story multiplex housing
- 3 story triplex
- Multiplex housing
- Multiplex housing
- Coffee + foodservice equipment
- Hotel

HAINT BLUE CEILING
The sky blue ceiling, **extending daylight**, of the new market makes the difference. Being harbinger of **good luck**, it is an subtle - yet bold - reference to the **blue porch ceiling** from many homes of the NOLA community.

LIVING BY THE I-10
Living too close to the I-10 should not be permitted. By **leaving a greener gap between the urban fabric** of the Tulane Gravier neighborhoods and the **elevated highway**, it brings back ray of lights and **life under it and close-by**.

EPHEMERAL PAVILION
Some **ephemeral gathering places** will also pop-up along the Skyfall boardwalk and anirne the market. From a degustation of a **locally brewed Bourbon's** to your neighbor artist's show case, these little pocket-place will lighten up your shopping time.

WEEKLY MARKET
The new weekly spot to get **fresh and healthy food** from the farmer's market and make it to the flea market to buy some new clothes.

GIVING A NOLA'S SPIRIT TO YOUR SHOPPING
Punctuated of some cafés, terraces, footpaths, musicians and artistic installations, the Skyfall Boardwalk will be living within the **NOLA's spirit and cultural heritage**.



BB THE SKYFALL BOARDWALK: THE UNDER INTERSTATE-10 AS NOLA'S NEW HEALTHY MARKET

/ STAYING ON BUDGET IN THE CITY
Heydon is a **university student** from out-of-state enrolled in a pharmacy program. He decided to move in an **affordable apartment** near the Tulane School of Public Health and the **Interim LSU Hospital** where he is **completing his internship** and hopes to work afterwards. On sunny days, he enjoys picking and **studying on the little place** near the Historic St. James Church, in the heart of his new neighborhood. On **Friday nights**, after catching a film outdoors at the new St-Louis Cinema, he loves going out with her friends to the **local brewery** on Toulouse Boardwalk. He also **adores the proximity of thrift shops**, the **Saturday morning flea market** and the **art gallery**.

/ RAISING A FAMILY IN A SAFE AND PLAYFUL NEIGHBORHOOD
Madison is a **single mom** who just moved into a **large new rental unit** in the now much greener and dynamic Tulane-Gravier neighborhood that **boasts parks** and **car-free streets** where kids can play. Her **little boy Ethan** will be **walking or biking safely to school** everyday. By taking the new express bus on N. Claiborne Avenue to her job as a hotel maid in the French Quarter, she has reduced her daily commute time by half. On her way back home, she enjoys stopping by the **newly haint bleu canopied Skyfall Market** under the I-10 to buy **fresh produce for dinner** and her son's school lunch.

/ RETIRING IN AN THRIVING URBAN ENVIRONMENT
Adèle and Eugene are a well-off **retired couple** who enjoys the **proximity of their home to public transit**. The area's many **cultural attractions**, the **close-by health services** and their colorful neighbors have made their **everyday life much more safer** and stimulating. Every evening, they now go for a **walk in the Lafitte Greenway** on their way to their pottery class at the **Community Center**, or simply to enjoy the park's refreshing wilderness.

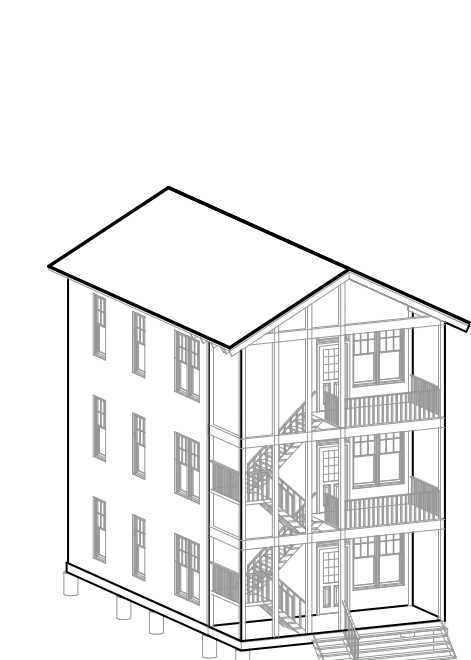
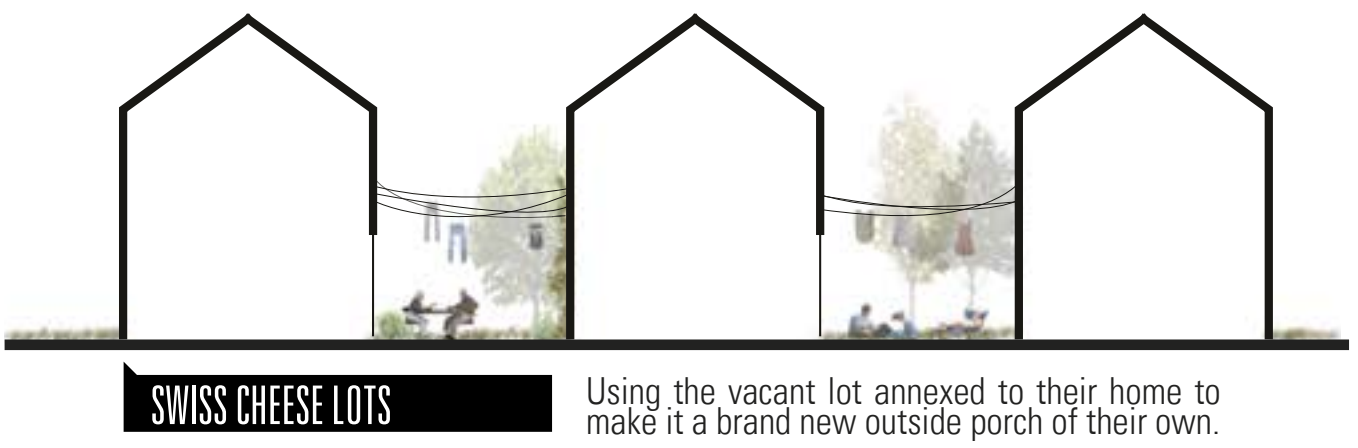
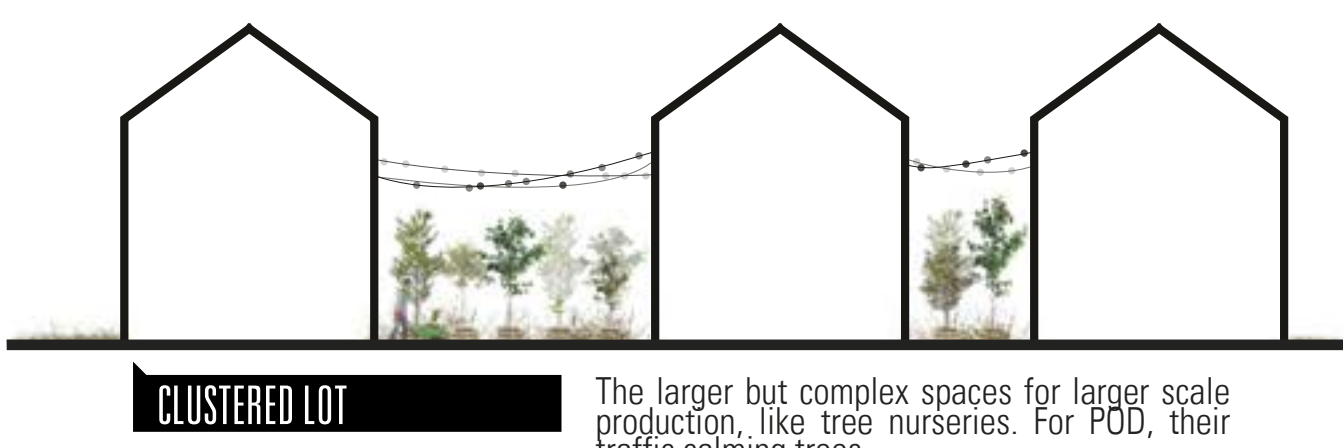
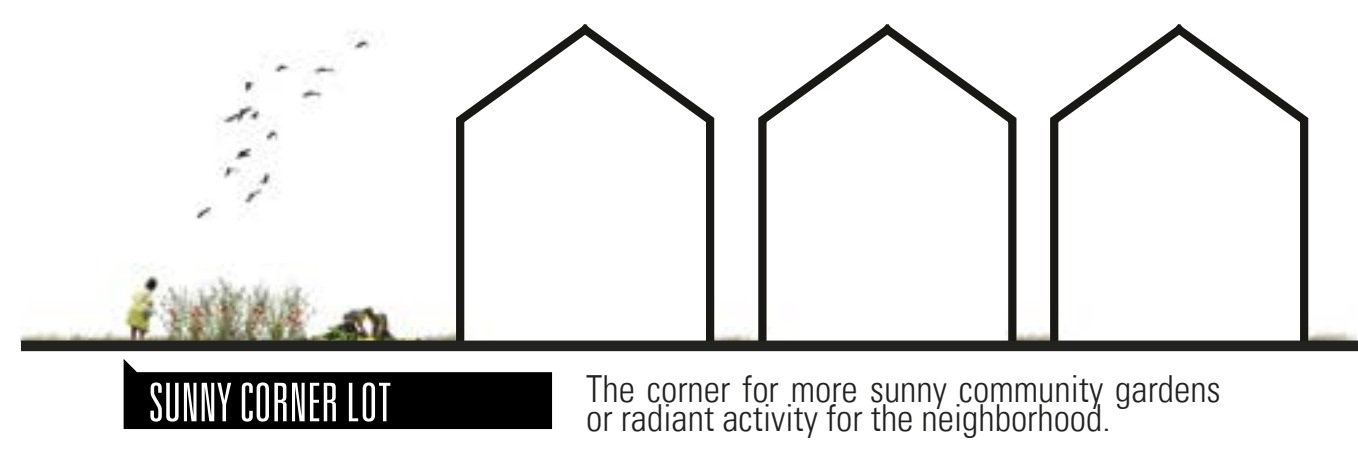
/ LIVING WITHIN THE CITY'S WILDERNESS
Seth lives in an apartment on St. Louis Street with his fiancée **Blair** within **walking distance from his work as a graphic designer for a new firm**. He loves to walk along the **newly canopied Toulouse Street**, right by the Lafitte Greenway and to stroll on the **newly canopied Toulouse Street**. Seth is an **enthusiast cyclist**, often using the Greenway bike path to go **all the way to Lake Pontchartrain** and back! Quite involved in her community, Blair organizes yearling **gardening and cooking activities for kids** from the **Youth Activity Center**.

/ BEING PART OF A SOFTENING NEIGHBORHOOD
Charles has been living in the Tulane-Gravier neighborhood in his renovated family home ever since he can remember. **New neighbors** renovating or building houses, **better public transit** and **new shops opening nearby** have **breathed new life in the area**. So much so that his girlfriend is now thinking of moving in with him. During this **delicate process of densification** and regeneration, vacant lots are literally flourishing **as they are transformed into all kinds of gardens and green spaces**. This thriving community makes him proud to be part of the change. He now **plans to build an addition to his house** so that his grandmother can also move in and remain close.

/ STAYING IN NOLA FOR ONE MORE DAY
The Beaulieu are a **French-Canadian family** from Montreal visiting NOLA during Spring Break. They're having such a good time that they have decided to **prolong their stay** to go on an **urban cycling excursion** to the scenic shores of **Lake Pontchartrain** by way of the Museum of Arts and the **City Park**. On their way back to their hotel in the French Quarter, they've decided to **stop for dinner on the Skyfall Boardwalk**, a stone's throw from the old city, where they enjoy a **vibrant and jazzy atmosphere** within the lush Louisiana wilderness.



CC THE LAFFITE GREENWAY: A SUSTAINABLE SPINE AND AN ACTIVE CORRIDOR FOR NOLA, FROM THE VEUX-SARRÉ TO LAKE PONTCHARTRAIN



DD HIERARCHY OF GREEN SPACE: FROM OPEN AND LARGE GREENWAY TO POCKET PLACES AND COMMUNITY GATHERING WITHIN THE TULANE-GRVIER NEIGHBORHOOD

While increasingly notorious for its flooding vulnerabilities, New Orleans is better known for its unique history, and rich cultural heritage, and its trees are no exception. The canopy of trees, which has forged the city's landscape and identity through time, is a big part of this heritage. Large oak trees, Pecan orchards and cypress trees each have a role to help maintain a balance between cityscape and landscape, neighborhood and park, nature and residents.